

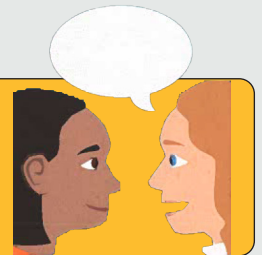


# Pharmacy and medicines support for care homes in Croydon



Facilitate medication supply including stock shortages and end of life medicines

Care home training and resources for pharmacists and care home staff



## We can provide support for structured medication review delivery

### Adult care home residents with a learning disability:

- ⚠ New onset of psychiatric symptoms e.g. depression, agitation
- ⚠ Behaviours that challenge
- ⚠ Worsening of their underlying physical or mental condition

### Hospital discharges care home patients, new residents and other at-risk groups, e.g:

- ⊘ Refusing medicine and covert medication
- ⊘ Insulin, Anticoagulants, Lithium
- ⊘ Risk of falls & recurrent falls
- ⊘ Polypharmacy
- ⊘ Renal dysfunction
- ⊘ End of life care medicine



For general enquiries relating to medicine and their use in care home settings:  
[swlccg.croypharmcarehome@nhs.net](mailto:swlccg.croypharmcarehome@nhs.net)  
Monday to Friday 9am-5pm

For enquiries relating to learning disability residents:  
[Thomas.lee5@nhs.net](mailto:Thomas.lee5@nhs.net)  
**07825 103206**  
Monday to Friday 8:30am-4:30pm

For enquiries relating to medicines of residents recently discharged from Croydon University hospital  
**The Trust's medicine helpline 0208 401 3059**  
Monday to Friday 9am-5pm